



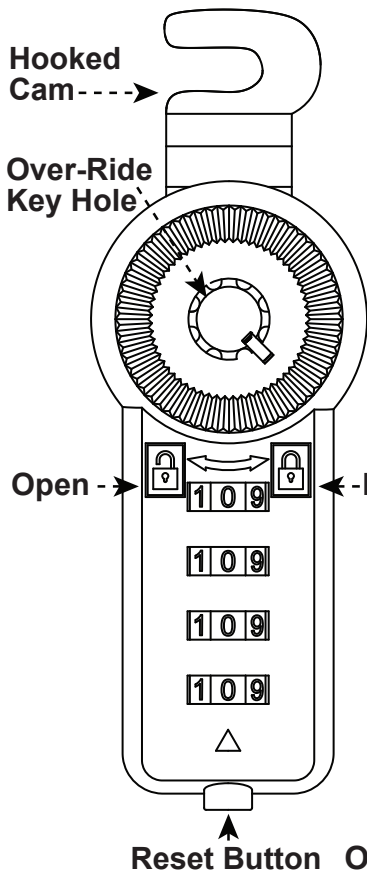
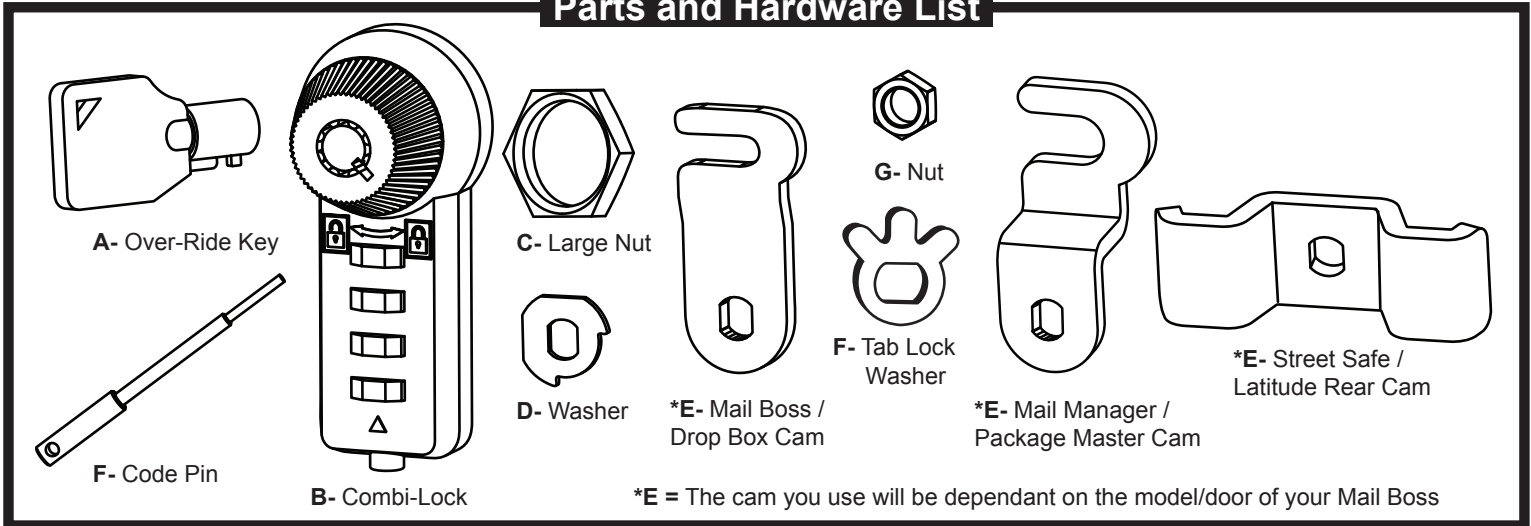
Combination Lock

The Mail Boss combination lock with key override and customizable code retrieval capabilities offers convenient keyless access and can convert any Mail Boss into a secure combination locking mailbox. The heavy duty die-cast metal cam lock replaces any 3/4" standard cam lock with 10000 possible combinations 10 times the combinations and safer than 3 digit combination locks. Below you will find a list of hardware parts and detailed installation instructions. Please take the time to carefully sort the hardware and familiarize yourself with the function of each piece for ease of installation.

If you require assistance with assembly, part replacement, or any other matter, contact the toll-free Epoch Design Service Center from anywhere in the Continental United States, M-F 9 AM - 5 PM PST at 1-800-589-7990. You may also email your request or comments to info@mailboss.com and a service representative will respond. Additional helpful hints, tips and tricks can also be found on our website: www.mailboss.com.

Thank you.

Parts and Hardware List



Set Your Own Combination: The combination can be changed in seconds without special tools or disassembly.

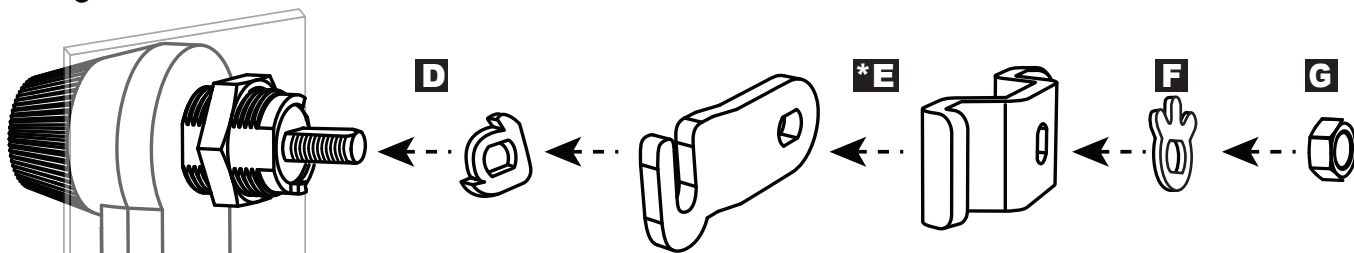
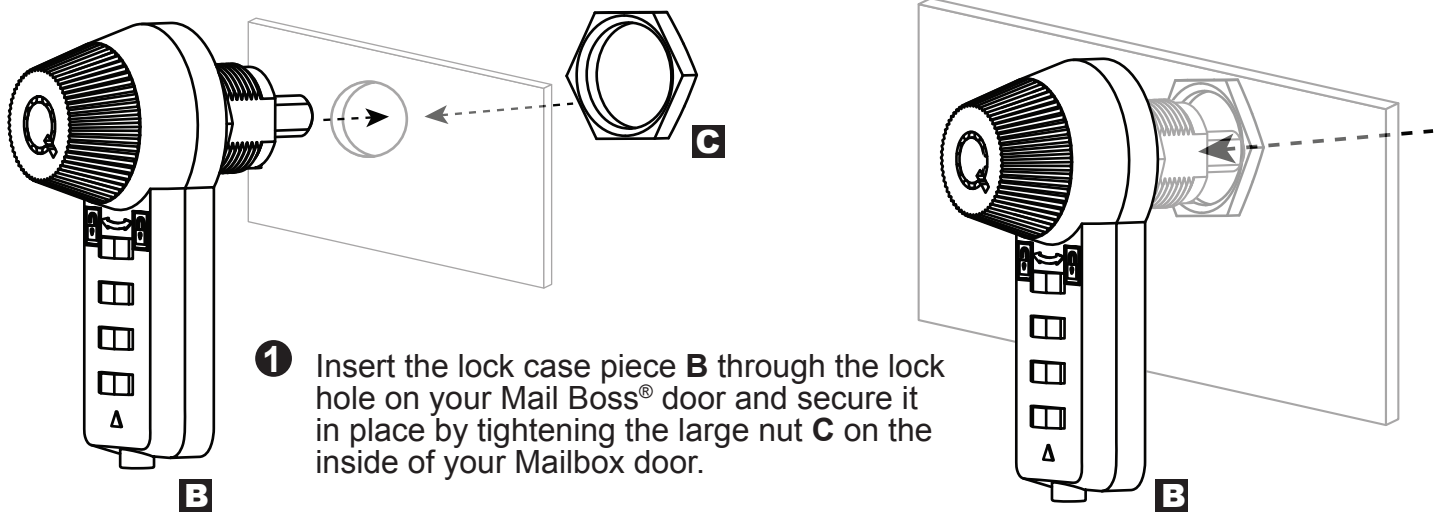
- Set Numbered Dials to opening combination (factory default all 0's)
- Depress Reset Button and hold down while changing Numbered Dials to desired combination.
- Release the Reset Button and the new combination is set.

Finding unknown Combinations:

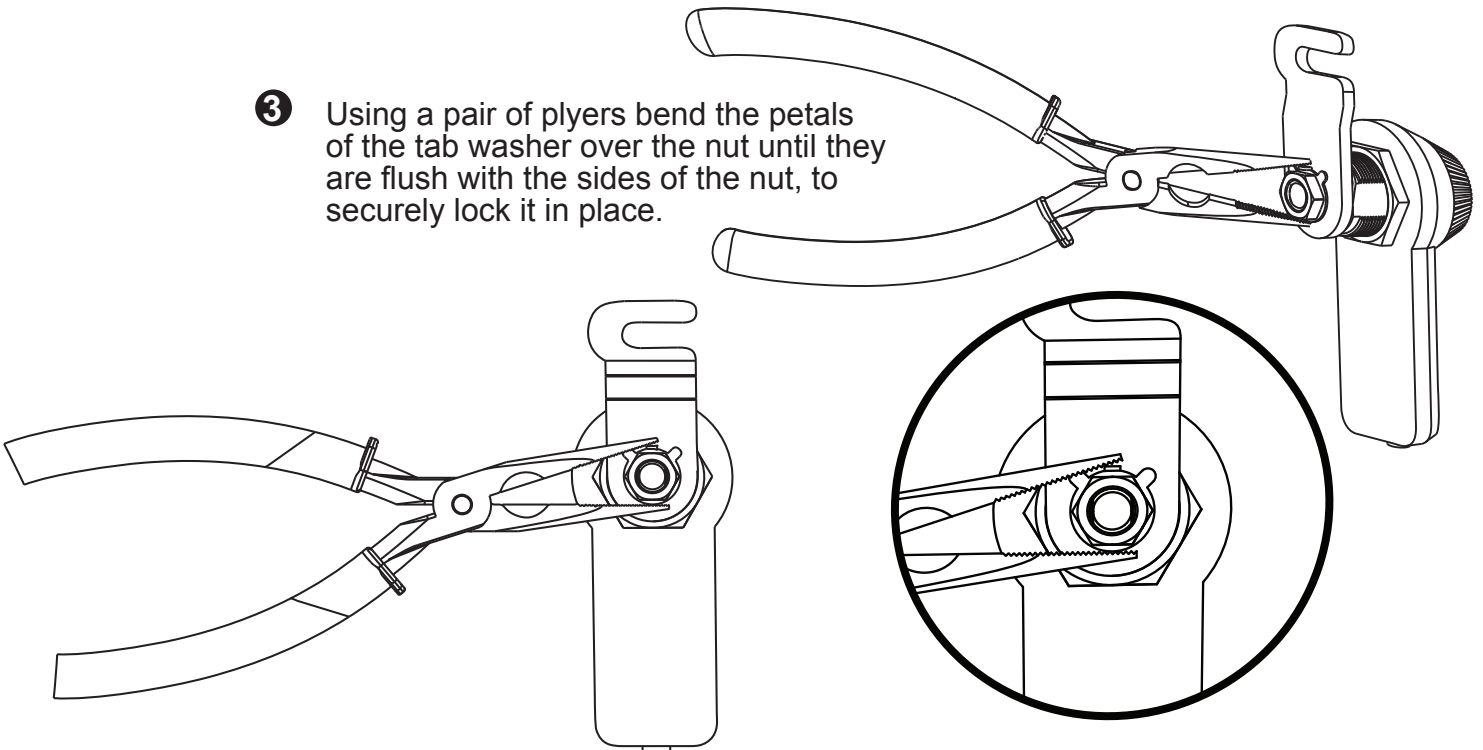
- Open the lock by using the Master Over-Ride Key.
- Remove the lock from the door by unscrewing the small nut on the back side of the lock and removing the Hooked Cam. Then remove the large nut holding the lock to the door.
- With the lock removed from the box, insert the code pin into one of the four holes on the back side of the lock behind the Numbered Dials.
- Turn the dial associated with that inserted pin until it stops.
- Repeat this step with the remaining three holes.
- When finished the numbers on the Dials will show your combination, please write this combination down and keep it safe yet accessible.

Have a question?... Need a part ASAP?...1-800-589-7990

Copyright © 2019 Epoch Design™ All rights reserved



- 3** Using a pair of pliers bend the petals of the tab washer over the nut until they are flush with the sides of the nut, to securely lock it in place.



Have a question?... Need a part ASAP?... 1-800-589-7990